



MOLYKOTE® Specialty Lubricants for the oil & gas industry

Smart Lubrication™ solutions to meet the needs of the upstream, midstream & downstream segments

Ensuring superior reliability & great uptime

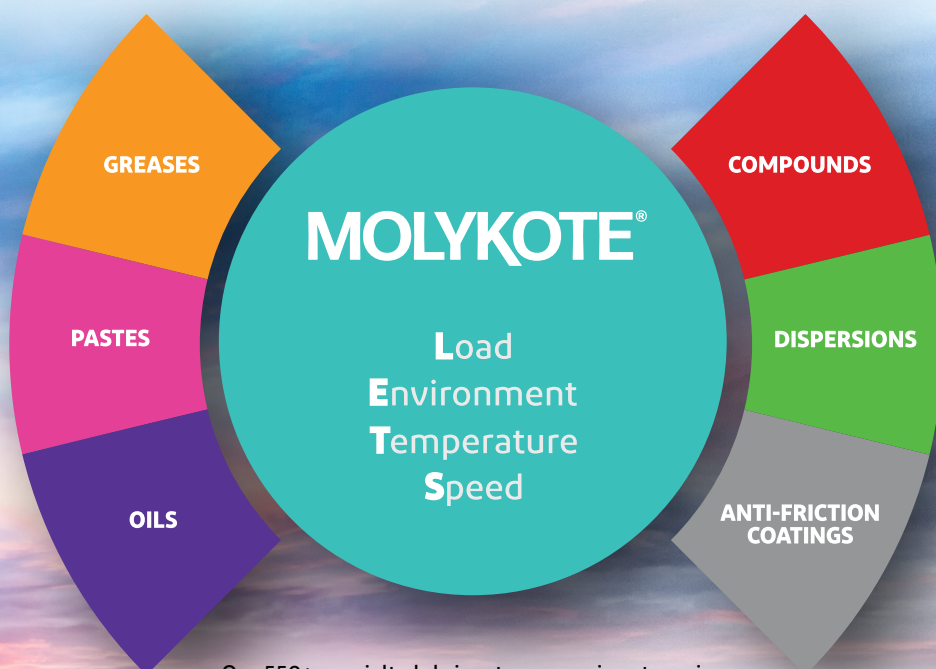
Whether on an offshore drilling rig, in a petroleum refinery or at an LNG terminal, extreme conditions and demanding schedules create critical lubrication issues at every turn. Increased equipment reliability and extended service life are important – not only for long-term equipment management, but also for the physical safety and well-being of equipment operators. MOLYKOTE® Specialty Lubricants help eliminate downtime, reduce maintenance and prevent losses.

In this document, you will learn more about our solutions for the oil and gas industry, including greases, pastes, oils, compounds, dispersions and anti-friction coatings for a variety of components – offshore and onshore. Pages 2 and 3 offer you a variety of MOLYKOTE® solutions for your toughest challenges in applications ranging from valves and flanges to downhole and surface equipment to electrical substations.

Read our
comprehensive
oil & gas lubricants
brochure:



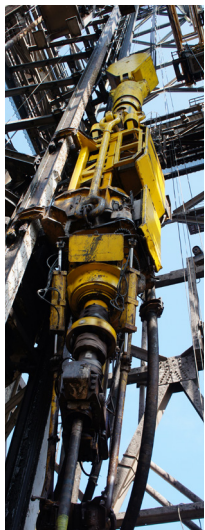
MOLYKOTE® Specialty Lubricants at a glance



Our 550+ specialty lubricants across six categories are *Smart Lubrication™* solutions for your innovation, performance and sustainability needs.

MOLYKOTE®

MOLYKOTE® solutions for oil-drilling rig & oil refinery components



1 Surface equipment

Wire rope/wireline

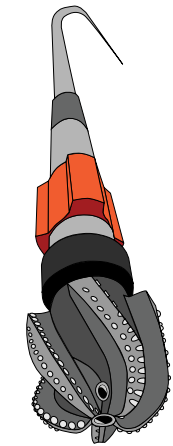
- **Corrosion protection:** MOLYKOTE® Longterm 00 Semi-Fluid Gearbox Grease or MOLYKOTE® BR-2 Plus High Performance Grease
- **No corrosion protection:** MOLYKOTE® 1122 Chain and Open Gear Grease

Bearings in draw works

- MOLYKOTE® Multilub High Performance Grease

Crown & traveling block

- **Block & tackle (set of pulleys/sheaves under high load):** MOLYKOTE® G-4700 Extreme Pressure Synthetic Grease
- **Sheave & roller bearing:** MOLYKOTE® BR-2 Plus High Performance Grease or MOLYKOTE® Longterm 2 Plus Extreme Pressure Bearing Grease



1 Downhole equipment components

Bearings

- **Drill bits:** MOLYKOTE® 165 LT Gearwheel Grease or MOLYKOTE® X Grease Paste
- **Mud motors/electric submersible pump:** MOLYKOTE® D-7409 Anti-Friction Coating or MOLYKOTE® D-6818 Anti-Friction Coating

Seals

- See "Seals" under "General components" on page 3

Threaded connections

- **Wet lubrication:** MOLYKOTE® P-37 Paste or MOLYKOTE® P-74 Assembly Paste
- **Dry lubrication:** MOLYKOTE® 3400A Anti-Friction Coating LF or MOLYKOTE® D-6600 Anti-Friction Coating

2 3 Valves

Seat rings

- MOLYKOTE® D-321 R Anti-Friction Coating

O-rings

- See "Seals" under "General components" on page 3

Plug

- **Standard:** MOLYKOTE® 111 Compound
- **Harsh chemical environment:** MOLYKOTE® 3452 Chemical Resistant Valve Lubricant, MOLYKOTE® 3400A Anti-Friction Coating LF or MOLYKOTE® 106 Anti-Friction Coating

Stem

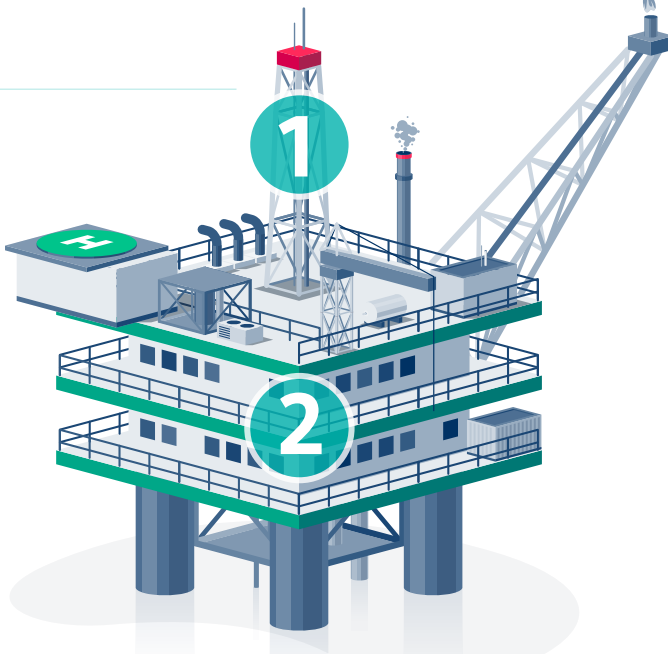
- **Housed stem in standard environment:** MOLYKOTE® G-Rapid Plus Paste
- **Housed stem in harsh chemical environment:** MOLYKOTE® 6169 Grease
- **Unhoused stem in dusty environment:** MOLYKOTE® D-321 R Anti-Friction Coating

Actuator

- MOLYKOTE® Longterm 2 Plus Extreme Pressure Bearing Grease

Fasteners

- **Standard:** MOLYKOTE® 1000 Paste
- **Sustainable solution:** MOLYKOTE® P-3300 Paste



Oil-drilling rig



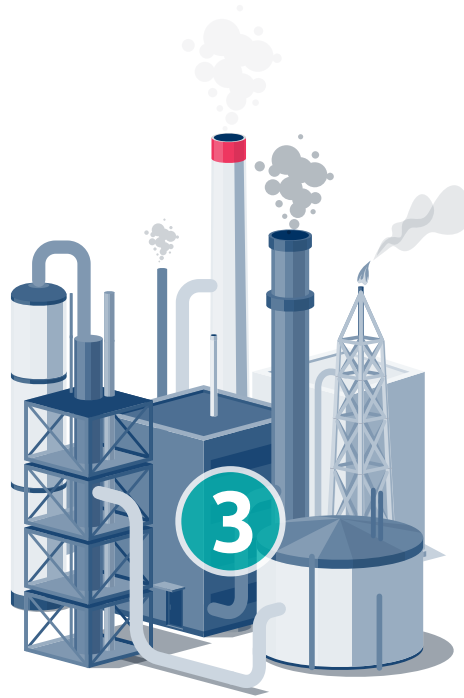
2 3 Flange components

Seals

- **Metal seal:** MOLYKOTE® D-321 R Anti-Friction Coating, MOLYKOTE® 3402-C LF Anti-Friction Coating, MOLYKOTE® P-3700 Anti-Seize Paste or MOLYKOTE® P-1042 Adhesive Grease Paste
- **Elastomer seal:** See "Seals" under "General components" on page 3

Threaded connections

- **Normal environment:** MOLYKOTE® G-Rapid Plus Paste
- **Subsea clamp connectors:** MOLYKOTE® 3400A Anti-Friction Coating LF or MOLYKOTE® P-40 (S) Paste
- **Refineries:** MOLYKOTE® 1000 Paste



Oil refinery

2 3 Electrical substation

General

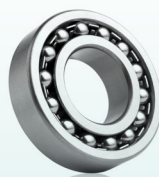
- **Gasket/seals:** MOLYKOTE® 3099 HVIC Compound or MOLYKOTE® 111 Compound
- **Switches:** MOLYKOTE® Cu-7439 Plus Paste V1, MOLYKOTE® 41 Extreme High Temperature Grease, MOLYKOTE® 44 Medium High Temperature Grease, MOLYKOTE® 33 Medium Extreme Low Temperature Grease or MOLYKOTE® 3451 Chemical Resistant Bearing Grease
- **Switch gears:** MOLYKOTE® 111 Compound
- **High-voltage electrical contacts:** MOLYKOTE® HP-300 Grease or MOLYKOTE® G-5008 Dielectric Grease

SF₆ circuit breaker

- **Bearings:** MOLYKOTE® 3451 Chemical Resistant Bearing Grease
- **Trip latches:** MOLYKOTE® G-N Metal Assembly Paste, MOLYKOTE® 33 Medium Extreme Low Temperature Grease or MOLYKOTE® 44 Medium High Temperature Grease
- **Dry lubrication for sliding surfaces:** MOLYKOTE® D-321 R Anti-Friction Coating

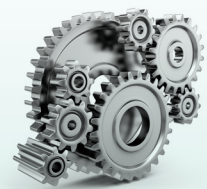


General components



Bearings

- **Standard:** MOLYKOTE® BR-2 Plus High Performance Grease or MOLYKOTE® Longterm 2 Plus Extreme Pressure Bearing Grease
- **High loads:** MOLYKOTE® BR-2 Plus High Performance Grease, MOLYKOTE® HP-870 Grease or MOLYKOTE® G-4700 Extreme Pressure Synthetic Grease
- **High temperatures:** MOLYKOTE® BG-20 Synthetic Bearing Grease, MOLYKOTE® G-5133M Wide Temperature Range Grease, MOLYKOTE® G-4700 Extreme Pressure Synthetic Grease, MOLYKOTE® 44 Medium High Temperature Grease, MOLYKOTE® 41 Extreme High Temperature Grease, MOLYKOTE® 3451 Chemical Resistant Bearing Grease, MOLYKOTE® HP-300 Grease or MOLYKOTE® HP-870 Grease
- **High speeds:** MOLYKOTE® BG-20 Synthetic Bearing Grease, MOLYKOTE® BG-555 Low Noise Grease or MOLYKOTE® HP-870 Grease
- **Good water-washout resistance:** MOLYKOTE® Longterm 2 Plus Extreme Pressure Bearing Grease, MOLYKOTE® G-0102 Bearing Grease, MOLYKOTE® G-4500 FMS Multi-Purpose Synthetic Grease or MOLYKOTE® G-1502 FM Synthetic Bearing & Gear Grease
- **Chemical & solvent resistance:** MOLYKOTE® 3451 Chemical Resistant Bearing Grease, MOLYKOTE® HP-870 Grease or MOLYKOTE® HP-300 Grease
- **Very low speeds; water washout resistance:** MOLYKOTE® 1122 Chain and Open Gear Grease, MOLYKOTE® P-1042 Adhesive Grease Paste, MOLYKOTE® P-40 (S) Paste, MOLYKOTE® X Grease Paste or MOLYKOTE® 165 LT Gearwheel Grease



Gears

Running-in

- MOLYKOTE® G-N Plus Paste or MOLYKOTE® G-Rapid Plus Paste

Operation of open gears

- **Standard:** MOLYKOTE® 1122 Chain and Open Gear Grease, MOLYKOTE® 165 LT Gearwheel Grease or MOLYKOTE® G-67 Extreme Pressure Grease
- **Corrosion resistance:** MOLYKOTE® 1122 Chain and Open Gear Grease or MOLYKOTE® Longterm 00 Semi-Fluid Gearbox Grease
- **High load resistance:** MOLYKOTE® Longterm 00 Semi-Fluid Gearbox Grease, MOLYKOTE® 165 LT Gearwheel Grease or MOLYKOTE® G-67 Extreme Pressure Grease

Operation of closed gears

- **Tackiness required:** MOLYKOTE® Longterm 00 Semi-Fluid Gearbox Grease
- **Fretting corrosion protection:** MOLYKOTE® D-321 R Anti-Friction Coating or MOLYKOTE® D-7409 Anti-Friction Coating
- **Shock or vibration exposure:** MOLYKOTE® 165 LT Gearwheel Grease or MOLYKOTE® G-4700 Extreme Pressure Synthetic Grease
- **Oil lubrication:** MOLYKOTE® L-Series Synthetic Gear Oils



Seals

- **Standard:** MOLYKOTE® 111 Compound or MOLYKOTE® 55 O-Ring Grease
- **Extreme low temperatures:** MOLYKOTE® 55 O-Ring Grease, MOLYKOTE® HP-300 Grease or MOLYKOTE® G-5008 Dielectric Grease
- **Extreme high temperatures:** MOLYKOTE® HP-300 Grease, MOLYKOTE® HP-870 Grease or MOLYKOTE® G-5008 Dielectric Grease
- **Chemical resistance:** MOLYKOTE® 3452 Chemical Resistant Valve Lubricant, MOLYKOTE® 6169 Grease, MOLYKOTE® HP-870 Grease or MOLYKOTE® HP-300 Grease
- **Double tandem mechanical seal:** MOLYKOTE® L-1605FM Synthetic Barrier Fluid



For more information

Read our comprehensive
oil & gas lubricants
brochure:



Explore MOLYKOTE®
products' technical
data sheets (TDS):



Read our
MOLYKOTE®
Pastes brochure:



Read our MOLYKOTE®
Anti-Friction Coatings
brochure:



About MOLYKOTE® Specialty Lubricants

Since 1948, customers around the world have trusted the MOLYKOTE® brand for performance and expertise to help solve complex, technical design and lubrication challenges. Today, our greases, compounds, pastes, dispersions, oils and fluids, and anti-friction coatings support customers' innovation, performance and sustainability needs. To learn more about our extensive product and service offering, to utilize our interactive product selection tool, or to locate a distributor, visit molykote.com.



Contact us

MOLYKOTE® has Contact Centers around the globe. Find the phone number for the center nearest you at www.dupont.com/molykotecontact.



DuPont®, the DuPont Oval Logo, and all trademarks and service marks denoted with ™, SM or ® are owned by affiliates of DuPont de Nemours, Inc. unless otherwise noted.
© 2025 DuPont.

The information set forth herein is furnished free of charge and is based on technical data that DuPont believes to be reliable and falls within the normal range of properties. It is intended for use by persons having technical skill, at their own discretion and risk. This data should not be used to establish specification limits nor used alone as the basis of design. Handling precaution information is given with the understanding that those using it will satisfy themselves that their particular conditions of use present no health or safety hazards. Since conditions of product use and disposal are outside our control, we make no warranties, express or implied, and assume no liability in connection with any use of this information. As with any product, evaluation under end use conditions prior to specification is essential. Nothing herein is to be taken as a license to operate or a recommendation to infringe on patents.

Form No. 01-2034-01-AGP0625

#17601M-60